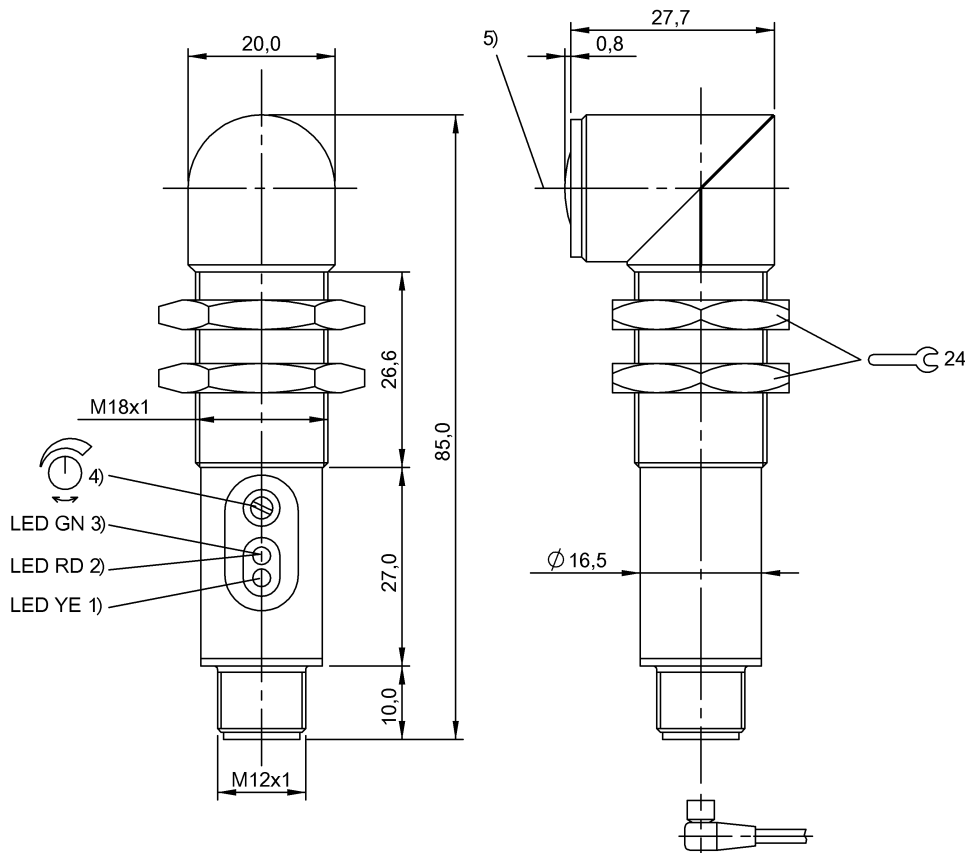


BLE 18MR-BA-1LT-S4-C
BOS0076



1) Output function 2) Error 3) Stability 4) Sn 5) Optical axis



US LISTED IND. CONT. EQ. 77HA for use in the secondary of a class 2 source of supply

Display/Operation

Adjuster	Potentiometer 18-turn (1x)
Setting	Sensitivity (Sn)

Electrical connection

Connection	M12x1-Connector, 4-pole, A-coded
Polarity reversal protected	yes
Short-circuit protection	yes

Electrical data

Load capacitance max. at Ue	1 µF
MTTF (40 °C)	15 a
No-load current Io max. at Ue	15 mA
Operating voltage Ub	10...30 VDC
Pollution degree	3
Rated insulation voltage Ui	75 V DC
Rated operating current Ie DC	200 mA
Rated operating voltage Ue DC	24 V
Ready delay tv max.	10 ms
Reference emitter	BLS 18M-XX-1LT-..

Residual current I _r max.	50 µA
Switching frequency	6000 Hz
Turn-off delay t _{off} max.	0.08 ms
Turn-on delay t _{on} max.	0.08 ms
Utilization category	DC -13
Voltage drop U _d max. at I _e	2.5 V

Environmental conditions

Ambient temperature	-10...50 °C
Protection class	II
Protection type IEC 60529	IP65

Functional safety

Diagnostic coverage	0 %
Functional safety	no
Mission Time	10 a

General data

Approval/Conformity	CE cULus
Basic standard	IEC 60947-5-2
Series	18MR

BLE 18MR-BA-1LT-S4-C BOS0076

Style Cylinder
Optics 90°

Material

Housing material Brass
Material sensing surface Glass
Surface protection nickel plates

Mechanical data

Dimension 20 x 85 x 28.5 mm
Fastening detail Nut M18x1
Smallest part typ. 30 µm at focal point, R0 = 20...
80 cm

Optical data

Ambient light max. 2000 Lux
Light type Laser Red light
Principle of optical operation Through-beam sensor (receiver)

Output/Interface

Switching output PNP Normally closed (NC)
PNP Normally open (NO)

Range/Distance

Measuring range 0...50 m
Range 0...50 m
Rated operating distance Sn 50 m, Adjustable
Ripple max. (% of Ue) 15 %

Remarks

For additional information, refer to user's guide.

Order accessories separately.

The sensor is functional again after the overload has been eliminated.

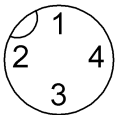
Only for applications per NFPA 79 (machines with a supply voltage of maximum 600 V). Use an R/C (CYJV2) cable with suitable properties for attaching the device.

Actuation object (target): gray card, 200 x 200, lateral approach

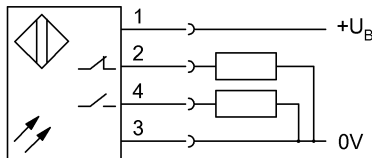
For further information on MTTF/B10d, please refer to the MTTF / B10d Certificate.

Specification of the MTTF value and the B10d value do not represent any binding quality and/or life expectancy guarantees.

Connector view



Wiring Diagram



BLE 18MR-BA-1LT-S4-C
BOS0076

Symbols for Optoelectronic Sensors

